



bell & spina

architects

building
envelope
specialists

planners

SYRACUSE UNIVERSITY RESIDENCE HALLS

Facilities Assessment/Capital Project Planning Study

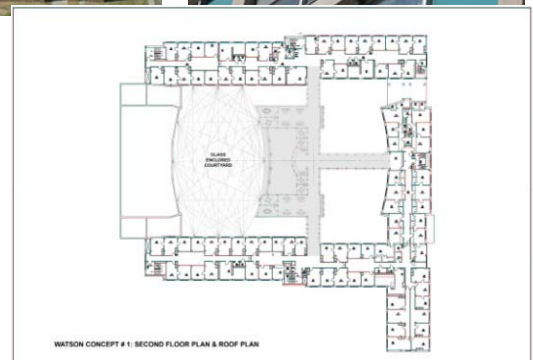
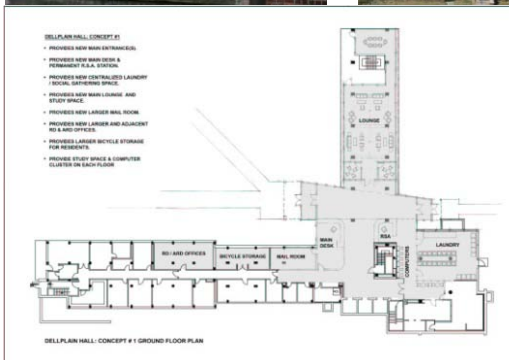


Owner:
Syracuse University
New York

Size or Cost:
TBD by Assessment

**Construction Cost
Estimate Phase I:**
\$74.9m

Study Completion:
2008



The team of Bell & Spina, P.C. and Peterson Engineering, P.C. was asked to assist Syracuse University in preparing a Facility Assessment and Capital Project Planning Report for all of Syracuse University's Residence Halls. The main objective of the Facility Assessment was to identify existing building components that are in need of repair/replacement and provide related project budgets.

A secondary objective was to identify overall building function deficiencies and to provide Concept ideas for how these larger more comprehensive projects may interface with the repair/replacement projects.

Three teams were assembled to conduct field investigations for three main categories:

- Site and exterior building envelope
- Building interior
- Mechanical, electrical, plumbing, fire protection, telephone/data, security and vertical transportation

Each category was evaluated utilizing a building evaluation checklist to maintain continuity of assessment.

Building function improvement projects presented in the Concept drawings show possible design strategies for enhancing or improving amenities such as social gathering spaces/lounges, study spaces, computer clusters as well as addressing single point building entrance issues.

215 Wyoming Street
Suite 201
Syracuse, NY 13204

315 • 488-0377
315 • 487-5947 fax

1151 Pittsford-Victor Rd
Suite 125
Pittsford, NY 14534

585 • 200-5038
585 • 248-9532 fax

info@bellandspina.com
www.bellandspina.com