



bell & spina

architects

building
envelope
specialists

planners

STATE UNIVERSITY OF NEW YORK AT CORTLAND

CASEY & SMITH RESIDENCE HALLS

Connector Green Roof



View of Green Roof Connector

The roof of the two-story connecting section between Casey & Smith Residence Hall Towers had taken a lot of abuse. Considering the roof deck had the structural capacity to support the system, a protected membrane system utilizing a vegetative "green" roofing system was ideal for the situation. It provided:

- protection for the roof membrane
- increased longevity of the membrane
- visual appeal
- reduction in water runoff
- reduction of radiant heat gain into the adjacent rooms

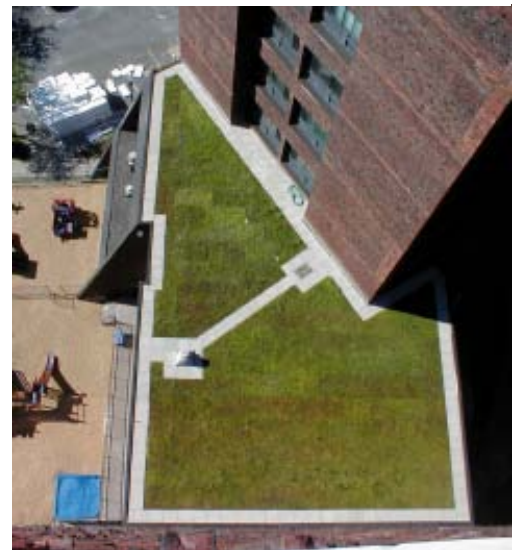
This roof replacement using sustainable design saves on utility costs while providing a solution that is pleasing to the eye and environmentally friendly.

Owner:
SUNY Cortland
Cortland, NY

Size or Cost:
3,500 SF
\$128,000



Roof Drain



Aerial of "Green" Roof

215 Wyoming Street
Suite 201
Syracuse, NY 13204
315 • 488-0377
315 • 487-5947 fax

1151 Pittsford-Victor Rd
Suite 125
Pittsford, NY 14534

585 • 200-5038
585 • 248-9532 fax

info@bellandspina.com
www.bellandspina.com

